

# FLOOR PLAN

Tower A, B, C - Eight To Nineteenth Floor  
Tower D, E - Eight To Eighteen Floor



## UNIT LAYOUT PLAN

2 BHK + STUDY + 2 TOILETS

SUPER AREA = 1310 SQFT.

RERA CARPET = 734.26 SQFT. (68.24 SQMTR.)

SUPER BUILTUP AREA = 1041.00 SQFT. (96.747 SQMTR.)

TOWER A,B,C - EIGHTH TO NINETEENTH FLOOR

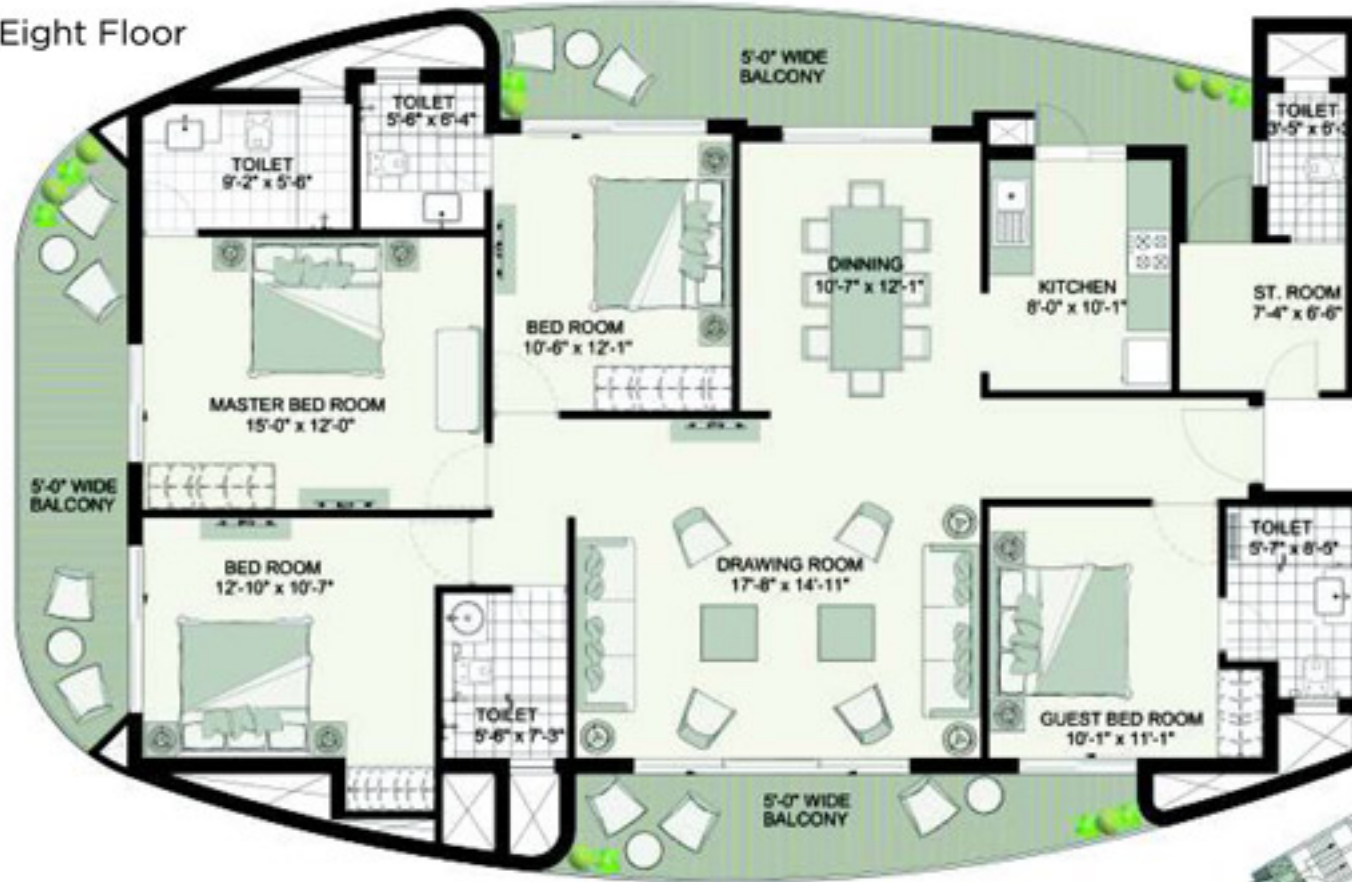
TOWER D,E - EIGHTH TO EIGHTEENTH FLOOR



CLUSTER LAYOUT

# FLOOR PLAN

Tower 1 - Ground to Twenty Eight Floor



## UNIT LAYOUT PLAN

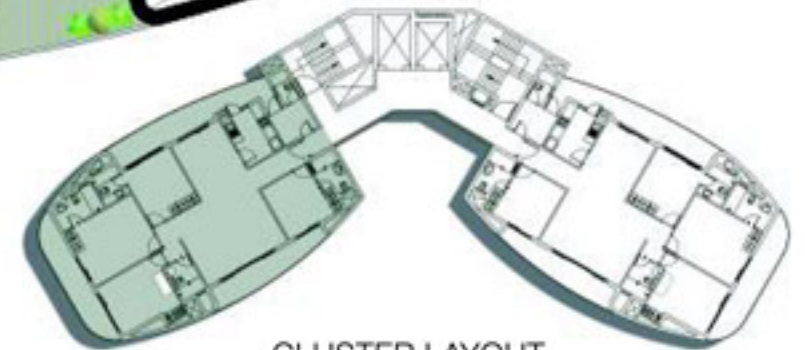
4 BHK + 4 TOILETS + SERVANT ROOM

SUPER AREA = 2520 SQFT.

RERA CARPET = 1431.03 SQFT. (132.946 SQMTR.)

SUPER BUILTUP AREA = 1975.79 SQFT. (183.556 SQMTR.)

TOWER I - GROUND TO TWENTY EIGHTH FLOOR



CLUSTER LAYOUT

# FLOOR PLAN

Tower F, G, - Ground To Fifth Floor  
Tower H- First to Fifth Floor



## UNIT LAYOUT PLAN

3 BHK + 3 TOILETS + SERVANT ROOM + SERVANT TOILET  
SUPER AREA = 1770 SQFT.  
RERA CARPET = 1069.76 SQFT. (99.42 SQMTR.)  
SUPER BUILTUP AREA = 1380.83 SQFT. (128.33 SQMTR.)

TOWER F,G - GROUND TO FIFTH FLOOR  
TOWER H - FIRST TO FIFTH FLOOR



CLUSTER LAYOUT

# FLOOR PLAN

Tower F, G, H- Sixth Floor



## UNIT LAYOUT PLAN

3 BHK + 3 TOILETS

SUPER AREA = 1720 SQFT.

RERA CARPET = 1001.43 SQFT. (93.07 SQMTR.)

SUPER BUILTUP AREA = 1401.81 SQFT. (130.28 SQMTR.)

TOWER F,G,H - SIXTH FLOOR



CLUSTER LAYOUT

# FLOOR PLAN

Tower F, G, H- Seventh to Eighteen Floor



## UNIT LAYOUT PLAN

3 BHK + 3 TOILETS

SUPER AREA = 1650 SQFT.

RERA CARPET = 983.79 SQFT. (91.43 SQMTR.)

SUPER BUILTUP AREA = 1283.88 SQFT. (119.32 SQMTR.)

TOWER F,G,H - SEVENTH TO EIGHTEENTH FLOOR



CLUSTER LAYOUT

# FLOOR PLAN

Tower A - First To Sixth Floor  
Tower B, C, D, E - Ground To Sixth Floor



## UNIT LAYOUT PLAN

2 BHK + STUDY + 2 TOILETS

SUPER AREA = 1390 SQFT.

RERA CARPET = 802.48 SQFT. (74.58 SQMTR.)

SUPER BUILTUP AREA = 1100.69 SQFT. (102.295 SQMTR.)

TOWER A - FIRST TO SIXTH FLOOR

TOWER B,C,D,E - GROUND TO SIXTH FLOOR



CLUSTER LAYOUT

# FLOOR PLAN

Tower A, B, C, D, E - Seventh Floor



## UNIT LAYOUT PLAN

2 BHK + STUDY + 2 TOILETS

SUPER AREA = 1320 SQFT.

RERA CARPET = 734.26 SQFT. (68.24 SQMTR.)

SUPER BUILTUP AREA = 1100.61 SQFT. (102.287 SQMTR.)

TOWER A,B,C,D,E - SEVENTH FLOOR



CLUSTER LAYOUT